

MAINTENANCE INSTRUCTIONS

1" IMPACT WRENCH

MODEL MI-38

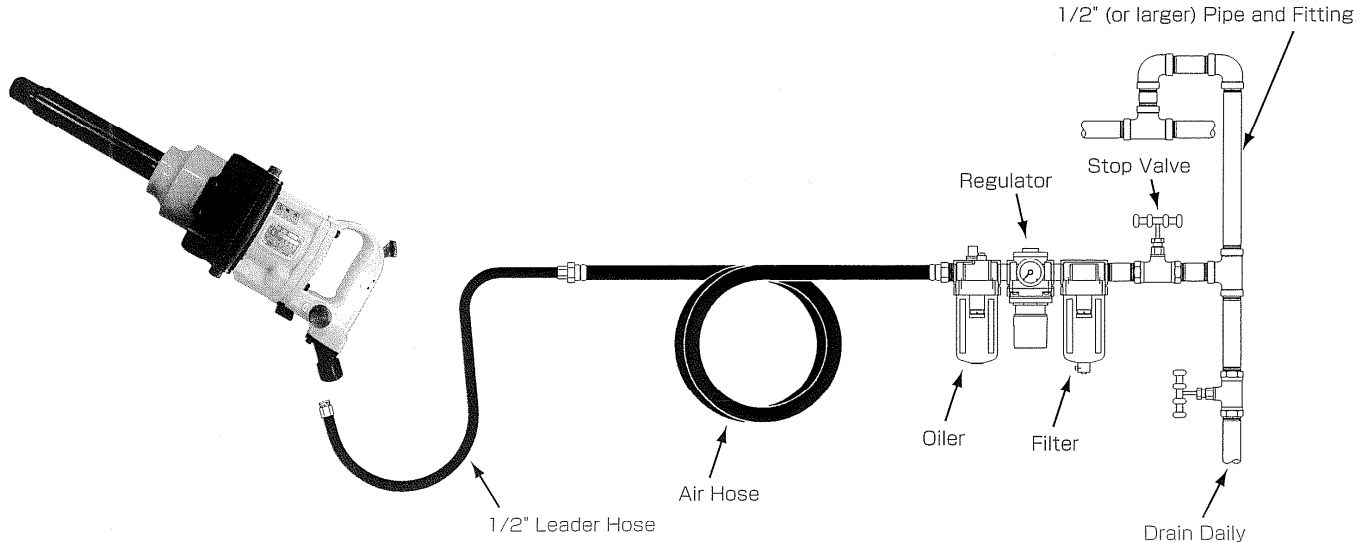
TOKU

TOKU PNEUMATIC PRODUCTS



www.air-allied.com.au

AIR HOSE AND HOSE CONNECTION:



OPERATING INSTRUCTIONS

“WARNING”

1. ALWAYS USE APPROVED EYE PROTECTION WHEN OPERATING THIS TOOL.
2. ALWAYS USE IMPACT SOCKETS IN GOOD CONDITION. SOCKETS IN BAD CONDITION REDUCE IMPACT POWER AND COULD ALSO SHATTER AND CAUSE POSSIBLE PERSONAL INJURY. NEVER USE HAND SOCKETS.
3. ALWAYS USE THE SIMPLEST HOOKUP POSSIBLE. LONG, SPRINGY EXTENSION BARS ABSORB IMPACT AND COULD BREAK LOOSE AND CAUSE POSSIBLE PERSONAL INJURY.
4. ALWAYS DIRECT EXHAUST AWAY FROM YOURSELF AND OTHERS IN THE AREA.
5. ALWAYS DISCONNECT TOOL WHEN NOT IN USE.

LUBRICATION

To flush out gum and dirt :

1. Daily before and after each shift, pour a liberal quantity of gum solvent oil into air line.
2. Connect tool to air line. Operate tool.
3. Repeat procedure before storing.
4. Monthly, check grease in impact unit.
5. At the timing of service, check grease class and q'ty if they are in accordance with the description below.
 - Grease class : NLGI No.2 (containing molybdenum)
 - Quantity in impact unit : 8 g

AIR SUPPLY

1. Supply tool with 0.6MPa of clean, dry air. Higher pressure drastically reduces tool life and can void warranty.
2. See diagram above for Pipe, Hose and Fitting size.
3. When using two or more tools, Air Hoses should be larger than Leader Hose.

LOSS OF POWER/ERRATIC ACTION (possible causes)

1. Reduced compressor output.
2. Excessive drain on air line.
3. Moisture or restricted pipe, hose or fittings.
4. Improper size or poor condition of pipe, hose or fittings
5. Dirt or gum deposits cut tool power. To correct this, check and clean air strainer, then repeat lubrication procedure. (If outside conditions are in order, disassemble tool, replace worn or damaged parts, clean, assemble and lubricate.)

REPLACEMENT PARTS

Always use GENUINE TOKU TOOLS Replacement Parts.

When replacement parts are required, order by Part No. and Description in the Parts List.

SOUND LEVEL

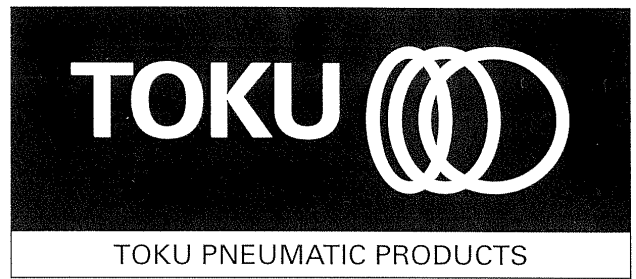
Sound Level dB(A) in accordance with ISO15744 : Pressure 96
Power 107

VIBRATIONS LEVEL

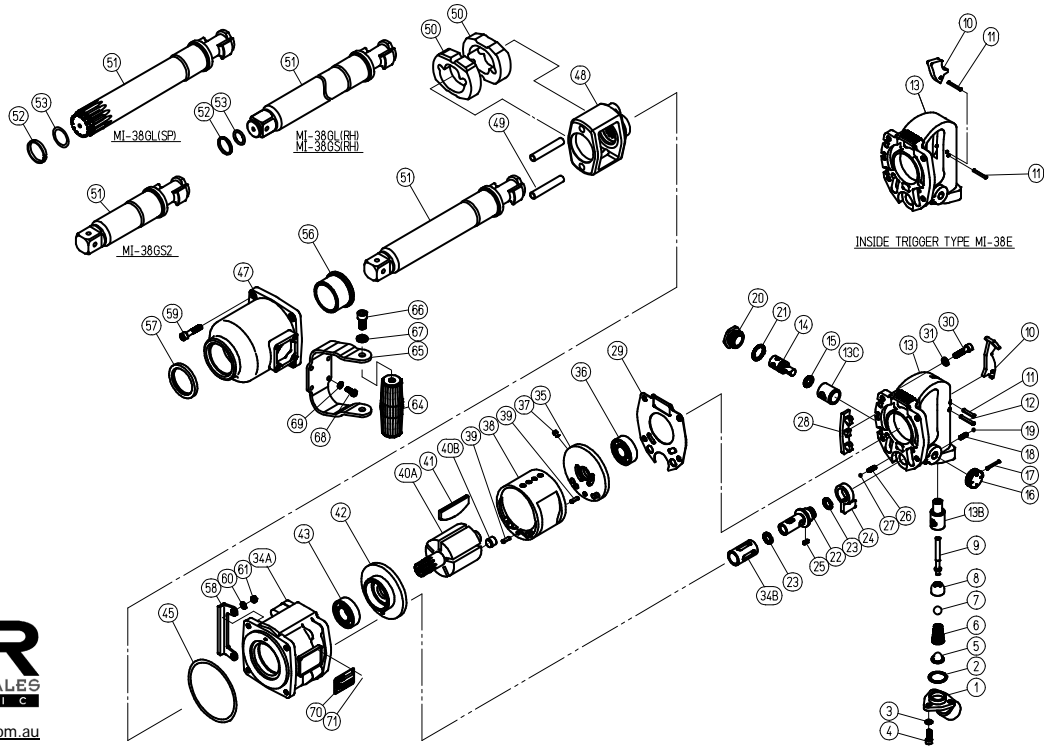
Vibration m/s² in accordance with ISO8662-7 : 9.4

No.8

MAINTENANCE INSTRUCTIONS 1" IMPACT WRENCH



Exploded view



PARTS LIST MI-38GL (H)

Index No.	Parts No.	Description	No. Req'd
001	43-16-81-G40	Air Inlet	1
002	13-11-03-018	O-Ring S-22.4	1
003	13-13-10-005	Spring Washer M5	3
004	13-17-05-016	Hex. Socket Head Cap Screw M5X16	3
005	13-68-03-032	Net Screen	1
006	13-08-08-002	Throttle Valve Spring	1
007	13-05-05-028	Polyurethane Rubber Ball	1
008	13-55-05-002	Throttle Valve	1
009	13-04-05-013	Throttle Push Rod	1
010	43-16-93-130	Trigger	1
011	13-06-04-020	Spring Pin 4X20	1
012	13-06-04-025	Spring Pin 4X25	1
013	43-17-53-02F	Handle CP	1
014	43-17-53-150	Control Valve	1
015	13-11-01-012	O-Ring P-12	1
016	13-67-04-051	Control Valve Knob	1
017	13-06-03-024	Spring Pin 3X24	1
018	13-08-08-001	Spring	1
019	13-05-02-010	Steel Ball	1
020	43-12-66-270	Control Valve Cap	1
021	13-11-03-016	O-Ring S-20	1
022	43-17-65-210	Reverse Valve	1
023	13-11-01-012	O-Ring P-12	2
024	43-17-65-230	Reverse Valve Lever	1
025	13-04-10-381	Key	1
026	13-08-08-001	Spring	1
027	13-05-02-010	Steel Ball	1
028	13-66-06-001	Protector (R)	1
029	13-61-04-055	Motor Housing Packing	1
030	13-17-06-025	Hex. Socket Head Cap Screw M6X25	4
031	13-13-09-006	Washer M6	4
034	43-17-65-01B	Motor Housing CP	1
035	43-18-85-370	Rear End Plate	1
036	13-01-07-004	Bearing 6203	1
037	46-98-00-090	Knok	1
038	43-17-65-360	Liner	1
039	13-06-04-012	Spring Pin 4X12	2
040	43-15-43-39B	Rotor CP	1
041	13-71-10-034	Vane	5
042	46-09-12-892	Front End Plate	1
043	13-01-06-005	Bearing 6004ZZ	1
045	13-11-03-051	O-Ring S-85	1
047	43-17-65-521	Clutch Housing	1
048	43-18-85-440	Hammer Frame	1
049	43-18-85-460	Hammer Pin	2
050	43-18-85-450	Hammer	2
051	43-18-85-500	Anvil Shank L(H)	1
056	43-18-85-530	Housing Bushing	1
057	13-12-02-048	Oil Seal VB-40525	1
058	13-62-01-017	Protector (F)	1

Index No.	Parts No.	Description	No. Req'd
059	13-17-06-030	Hex. Socket Head Cap Screw M6X30	4
060	13-13-09-006	Washer M6	4
061	13-45-01-006	U-Nut M6	4
064	43-12-66-620	Grip	1
065	43-16-81-550	Dead Handle	1
066	13-19-08-016	Hex. Socket Button Head Screw M8X16	2
067	13-13-09-008	Washer M8	2
068	13-19-05-014	Hex. Socket Button Head Screw M5X14	4
069	13-13-10-005	Spring Washer M5	4
070	13-73-05-084	Name Plate	1
	43-17-65-02D	Handle Assy (Incl. Index No. 1,2,3,4,5,6,7,8,9,10,11,12,13, 14,15,16,17,18,19,20,21,26&27)	(1ASSY)
	43-18-85-52C	Cluch Housing CP (Incl. Index No. 47,56&57)	(1CP)
	43-16-81-55C	Dead Handle CP (Incl. Index No. 64,65,66&67)	(1CP)

MI-38GS2(H)

Index No.	Parts No.	Description	No. Req'd
051	43-18-83-500	Anvil Shank S2(H)	1

MI-38GL(RH)

Index No.	Parts No.	Description	No. Req'd
051	43-18-88-500	Anvil Shank L(RH)	1
052	13-08-03-144	Socket Retainer Ring	1
053	13-11-05-013	O-Ring 6227-13	1
	43-18-88-50C	Anvil Shank L(RH) CP (Incl. Index No. 51,52&53)	(1CP)
NPT TYPE			
001	43-16-51-070	Air Inlet (NPT)	1

MI-38GS(RH)

Index No.	Parts No.	Description	No. Req'd
051	43-18-89-500	Anvil Shank S(RH)	1
052	13-08-03-144	Socket Retainer Ring	1
053	13-11-05-013	O-Ring 6227-13	1
	43-18-89-50C	Anvil Shank S(RH) CP (Incl. Index No. 51,52&53)	(1CP)

MI-38GL(SP)

Index No.	Parts No.	Description	No. Req'd
051	43-18-87-500	Anvil Shank L(SP)	1
052	13-08-03-145	Socket Retainer Ring	1
053	13-11-05-019	O-Ring 6227-19	1
	43-18-87-50C	Anvil Shank L(SP) CP (Incl. Index No. 51,52&53)	(1CP)

INSIDE TRIGGER TYPE MI-38E

Index No.	Parts No.	Description	No. Req'd
010	43-12-67-130	Trigger	1
011	13-06-03-024	Spring Pin 3X24	2
013	43-17-45-02F	Handle CP	1
	43-18-79-02D	(Incl. Index No. 1,2,3,4,5,6,7,8,9,10,11,13,14,	(1ASSY)